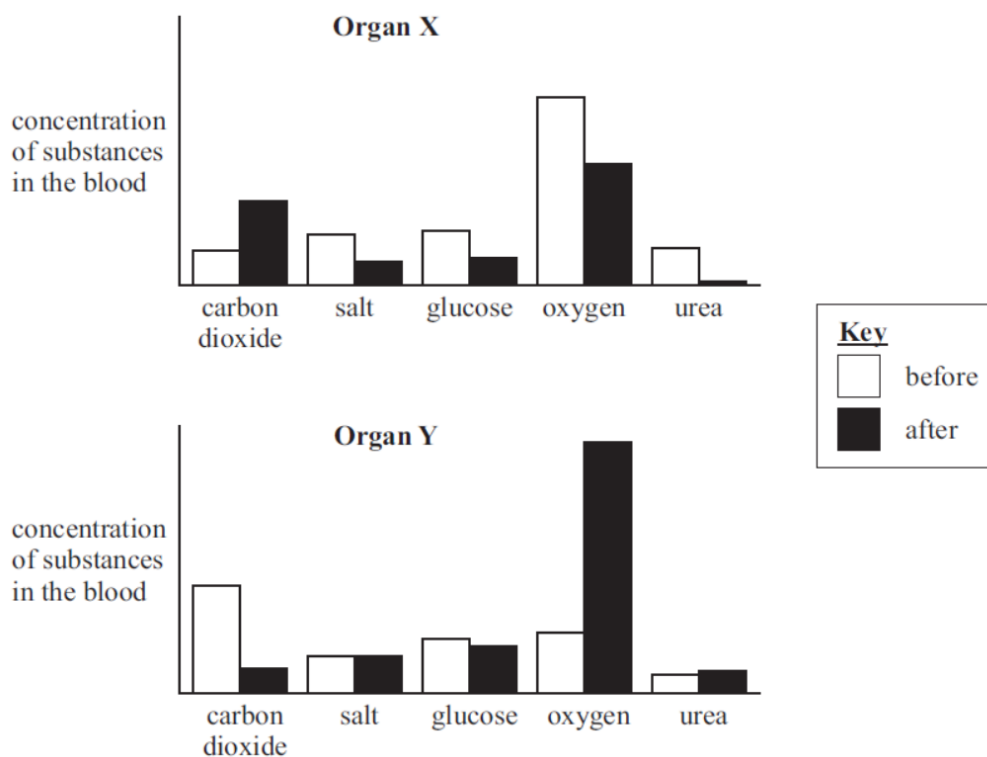




Circulatory System

2003

- 26 The bar charts X and Y show the concentration of five substances in the blood before and after passing through two organs.



What are the organs X and Y through which the blood has passed?

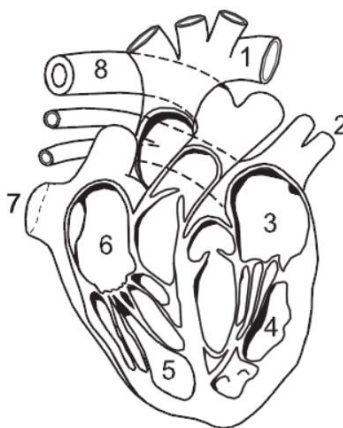
- |   | X      | Y      |
|---|--------|--------|
| A | heart  | lung   |
| B | kidney | liver  |
| C | kidney | lung   |
| D | liver  | kidney |
| E | lung   | heart  |
| F | lung   | liver  |



Circulatory System

2004

- 1 The diagram shows a view from the front of a section through the heart and associated blood vessels.



Which sequence of numbers shows the course of blood flow from the point of entry to the heart from the lungs, to its eventual exit from the heart to supply the lungs?

- A 2 → 3 → 4 → 8 → 1 → 5 → 6 → 7
- B 2 → 3 → 4 → 1 → 7 → 6 → 5 → 8
- C 7 → 6 → 5 → 8 → 2 → 3 → 4 → 1
- D 7 → 6 → 5 → 1 → 8 → 4 → 3 → 2
- E 8 → 5 → 6 → 7 → 2 → 3 → 4 → 1
- F 8 → 5 → 6 → 7 → 1 → 4 → 3 → 2



## Circulatory System

21 Which blood vessel will have capillaries at both ends?

- A Anterior vena cava
- B Aorta
- C Hepatic artery
- D Hepatic portal vein
- E Renal vein



## Circulatory System

---

## 2005

---

- 24 During the fetal stage an opening, the foramen ovale, exists in the septum between the two atria. This allows blood to flow from the right atrium to the left atrium.

The opening should close during birth. If this fails to happen, which **one** of the following is the **main** problem to the health of the baby?

- A Blood in the aorta would not be fully oxygenated.
- B The heart beat rate would decrease.
- C The amount of blood pumped at each stroke would fall.
- D The pulmonary vein would only contain deoxygenated blood.
- E The volume of blood pumped to the lungs will increase.


**Circulatory System**

# 2007

- 21 A patient with leukaemia is being treated with chemotherapy and radiotherapy. The patient is found to have a low blood platelet count and a high percentage of the white blood cells are abnormal.

Which row of the table shows this patient's symptoms?

	<b>disease resistance</b>	<b>blood clotting</b>	<b>oxygen transport</b>
<b>A</b>	low	low	low
<b>B</b>	high	low	high
<b>C</b>	low	normal	low
<b>D</b>	high	normal	normal
<b>E</b>	low	low	normal
<b>F</b>	high	normal	high



---

**Circulatory System**

---

**2008**

---

21 The four statements are about the movement of blood during one complete circuit of the body.

- 1 Blood flowing from the lungs flows through the heart twice.
- 2 All the blood flowing from the lungs flows through the kidneys.
- 3 All the blood flowing from the liver flows through the lungs.
- 4 Only blood flowing from the digestive system flows through the liver.

Which of the above statements are correct?

- A 1 and 2 only
- B 1 and 3 only
- C 1 and 4 only
- D 2 and 3 only
- E 2 and 4 only
- F 3 and 4 only