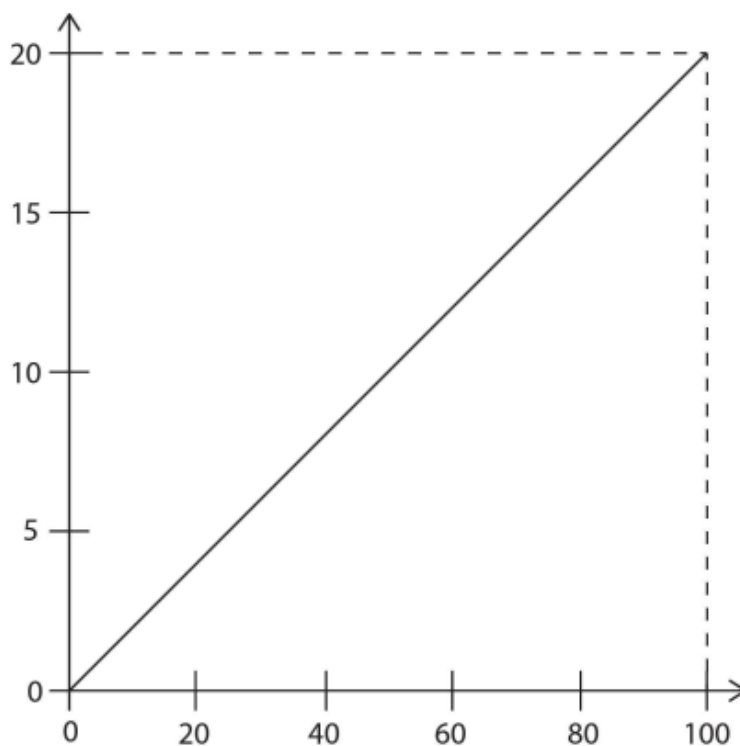




S.I. Units

2013

23 Consider this graph.



Which one of the following could the graph **not** represent if all quantities are in S.I. units?

- A The variation of the acceleration (y -axis) of a body of mass 5.0 kg with the resultant force acting on the body (x -axis).
- B The variation of the current (y -axis) through a $5.0\ \Omega$ resistor with the applied voltage (x -axis).
- C The variation of the kinetic energy (y -axis) of a body of mass 0.4 kg with the square of its speed (x -axis).
- D The variation of the wavelength (y -axis) of waves with a speed of 0.2 m/s with their frequency (x -axis).
- E The variation of the work done (y -axis) by a force of 0.2 N with the distance it moves through (x -axis).